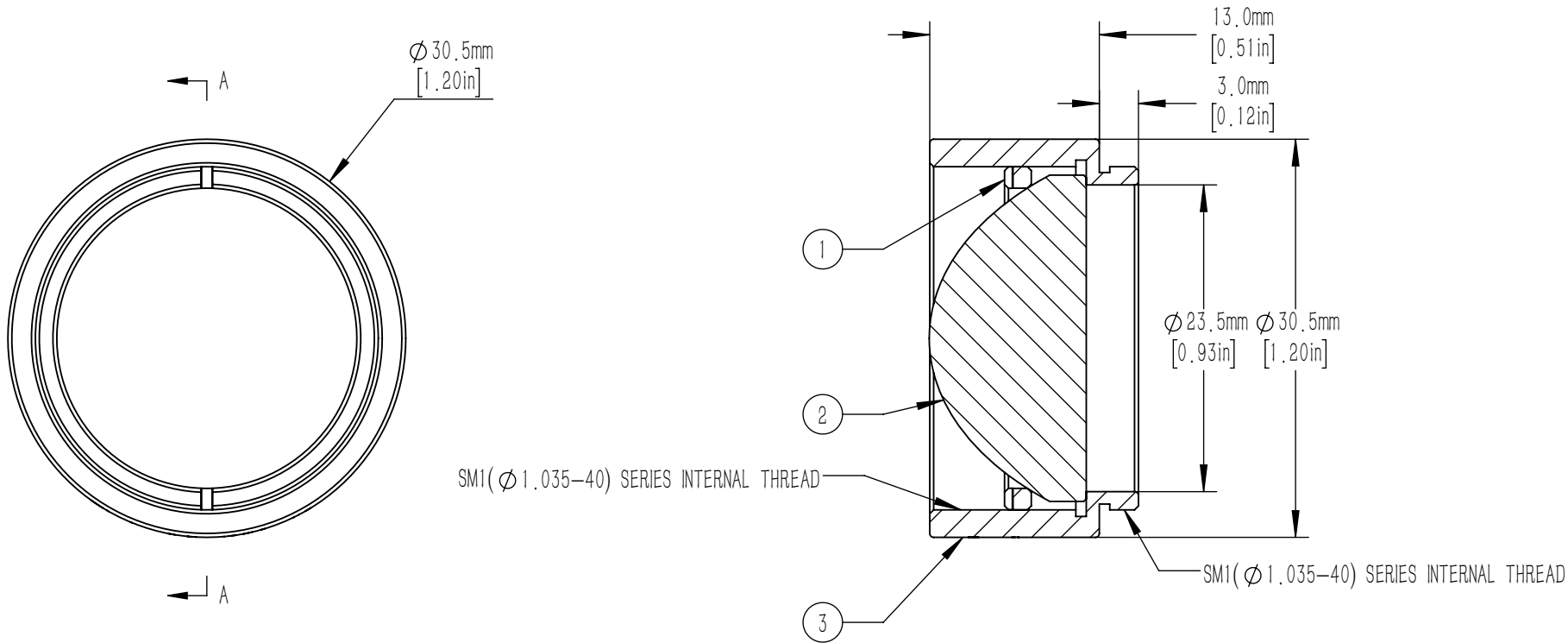




	PART DESCRIPTION	MATERIAL
①	SM1RR	ANODIZED ALUMINUM
②	ACL025-20-B	B270
③	SM1L12-A	ANODIZED ALUMINUM



- NOTES/SPECIFICATIONS:
1. WORKING WAVELENGTH: 650 nm-1100 nm
  2. FOCAL LENGTH: f=20.1 mm±8%
  3. NUMERICAL APERTURE: 0.6
  4. CLEAR APERTURE 90% Of Diameter
  5. SURFACE QUALITY: 80/50
  6. COATING: Ravg<0.5%@650-1100 nm

FOR INFORMATION ONLY NOT FOR  
MANUFACTURING PURPOSES

DRAWING PROJECTION						
						
	NAME	DATE	Mounted D25mm, F=20mm, NA=0.60, Aspheric Condenser Lens, B Coated			
DRAWN	CWD	2022/5/18	ACL025-20-B-ML			
APPROVAL	ZSE	2022/5/18	MATERIAL	WEIGHT	SCALE	REV
FOR INFORMATION ONLY NOT FOR MANUFACTURING PURPOSES			N/A	0.019kg	2:1	A