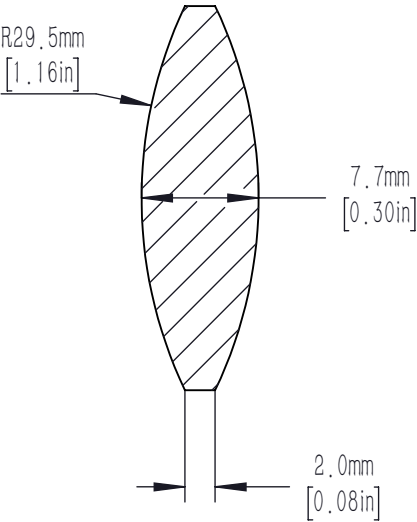
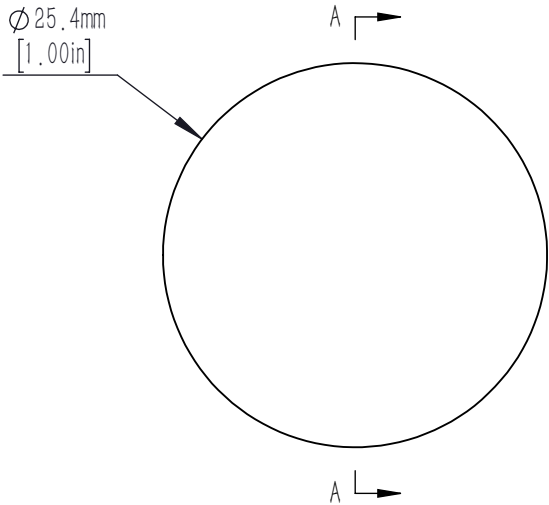




FOR INFORMATION ONLY NOT FOR  
MANUFACTURING PURPOSES



SCETION A—A

- NOTES/SPECIFICATIONS:
- 1. DESIGN WAVELENGTH: 587.6nm1.
  - 2. FOCAL LENGTH: f=30.0mm ± 1%
  - 3. BACK FOCAL LENGTH(REF): bf=27.3mm
  - 4. CLEAR APERTURE: >90%
  - 5. SURFACE QUALITY: 40-20 SCRATCH-DIG
  - 6. CENTRATION: <3arcmin
  - 7. DIAMETER TOLERANCE: +0.0/-0.1mm
  - 8. THICKNESS TOLERANCE: ±0.1mm

DRAWING PROJECTION 						
	NAME	DATE	D25.4 F=30.0 N-BK7 Bi Convex Lens			
DRAWN	CWD	2022/5/18	BX1254-30-1			
APPROVAL	ZSB	2022/5/18	MATERIAL	WEIGHT	SCALE	REV
FOR INFORMATION ONLYNOT FOR MANUFACTURING PURPOSES			N-BK7	0.0063kg	2:1	A