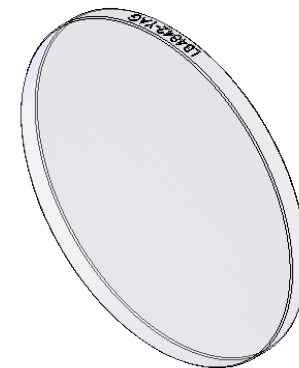


SECTION A-A




ISOMETRIC VIEW
SCALE: 1:1

NOTES/SPECIFICATIONS:

- DESIGN WAVELENGTH: 587.6 nm
- FOCAL LENGTH: $f=200.7 \text{ mm} \pm 1\%$
- BACK FOCAL LENGTH(REF): $bf=198.4 \text{ mm}$
- CLEAR APERTURE: $> \varnothing 45.72 \text{ mm}$
- SURFACE QUALITY: 20-10 SCRATCH-DIG
- CENTRATION: $\leq 3 \text{ arcmin}$
- DIAMETER TOLERANCE: $+0.0/-0.1 \text{ mm}$
- THICKNESS TOLERANCE: $\pm 0.1 \text{ mm}$
- SURFACE IRREGULARITY: $\leq \lambda/4$, @633 nm
- SPHERICAL SURFACE POWER: $\leq 3\lambda/2$, @633 nm
- COATING(S1,S2): VAR R<0.25% PER SURFACE FOR 532 nm & 1064 nm, 0° AOI

FOR INFORMATION ONLY
NOT FOR MANUFACTURING PURPOSES

DRAWING PROJECTION			 www.thorlabs.com	
	NAME	DATE		
DRAWN	YB	12/JUN/24	$\varnothing 50.8 \text{ mm } f=200 \text{ mm UVFS}$ BI CONVEX LENS, -YAG COAT	
APPROVAL	MJC	02/JUL/24	MATERIAL	
COPYRIGHT © 2024 BY THORLABS			UV FUSED SILICA	
VALUES IN PARENTHESIS ARE CALCULATED AND MAY CONTAIN ROUND OFF ERRORS			ITEM #	APPROX WEIGHT
			LB4842-YAG	21.3 g
				REV A