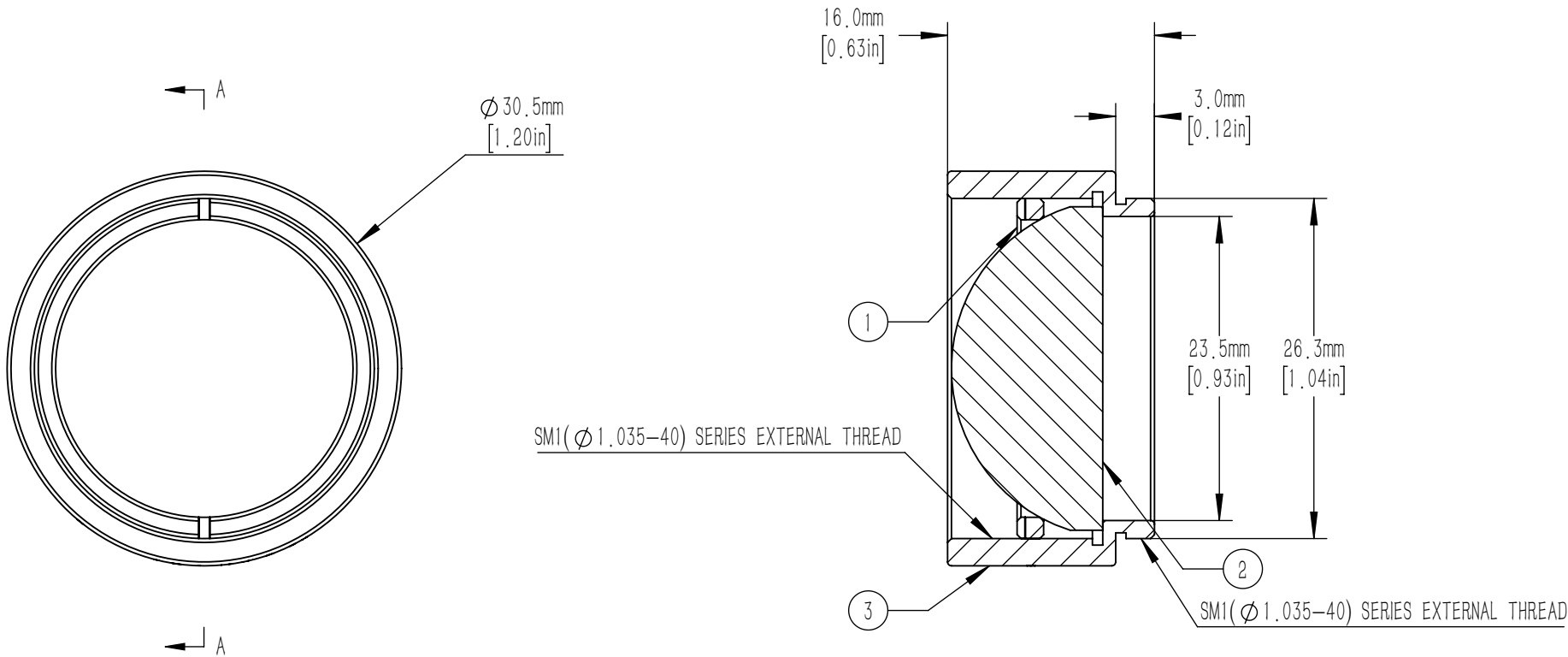




	PART DESCRIPTION	MATERIAL
①	SM1RR	ANODIZED ALUMINUM
②	PX1025-25.4-C	N-BK7
③	SM1L12-A	ANODIZED ALUMINUM



- NOTES/SPECIFICATIONS:
- DESIGN WAVELENGTH: 587.6 nm
  - FOCAL LENGTH:  $f=25.4\text{ mm}\pm 1\%$
  - WORKING DISTANCE (REF): 17.7 mm
  - CLEAR APERTURE:  $> 90\%$  Of Diameter
  - SURFACE QUALITY: 40-20 SCRATCH-DIG
  - COATING: BBAR  $R_{avg}<0.5\%$  FROM 650-1100 nm, AOI: 0° ON OUTER OPTICAL SURFACES

FOR INFORMATION ONLY NOT FOR  
MANUFACTURING PURPOSES

DRAWING PROJECTION							
	NAME	DATE	Mounted D25 F=25.4 N-BK7 C Coated Plano Convex Lens				
DRAWN	CWD	2022/5/18	PX1025-25.4-C-ML				
APPROVAL	ZSB	2022/5/18	MATERIAL	WEIGHT	SCALE	REV	
FOR INFORMATION ONLYNOT FOR MANUFACTURING PURPOSES			N/A	0.020kg	2: 1	A	