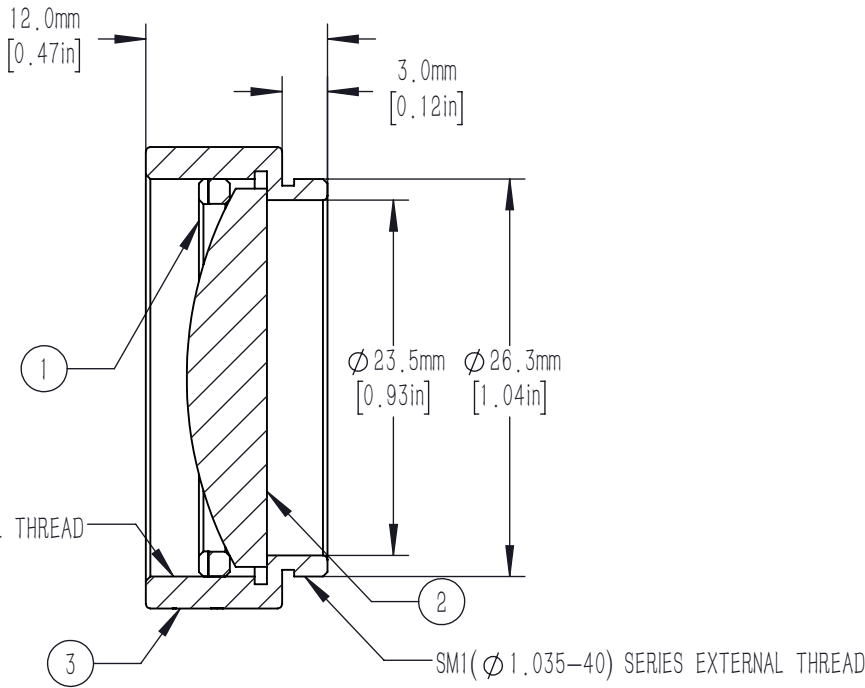
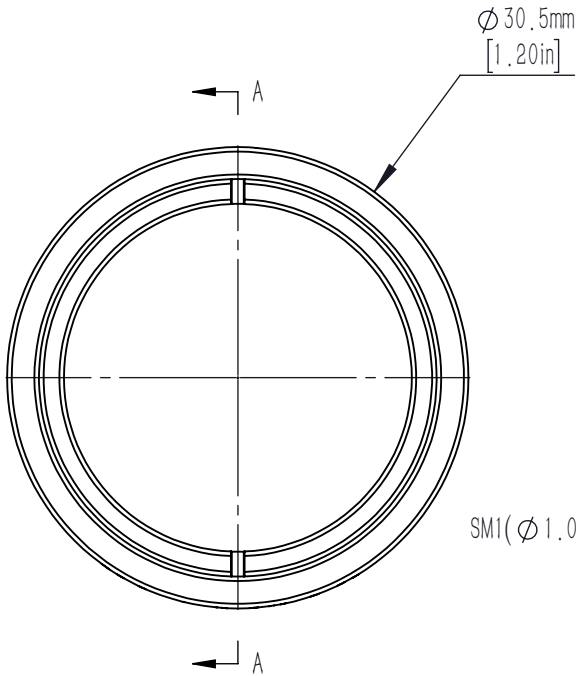




| | PART DESCRIPTION | MATERIAL |
|---|------------------|-------------------|
| ① | SM1RR | ANODIZED ALUMINUM |
| ② | PX1025-50-B | N-BK7 |
| ③ | SM1L8-A | ANODIZED ALUMINUM |



NOTES/SPECIFICATIONS:

- DESIGN WAVELENGTH: 587.6nm
- FOCAL LENGTH: $f=50.0\text{mm}\pm 1\%$
- WORKING DISTANCE (REF): 46.6mm
- CLEAR APERTURE: $> 90\%$ Of Diameter
- SURFACE QUALITY: 40-20 SCRATCH-DIG
- COATING: BBAR $R_{\text{avg}} < 0.5\%$ FROM 650-1100nm, AOI: 0° ON OUTER OPTICAL SURFACES

FOR INFORMATION ONLY NOT FOR
MANUFACTURING PURPOSES

| | | | | | | |
|--|------|-----------|--|---------|-------|-----|
| DRAWING PROJECTION  | | |  睿创光科 | | | |
| | NAME | DATE | Mounted D25 F=50.0 N-BK7 B Coated Plano Convex Lens | | | |
| DRAWN | CWD | 2022/5/18 | PX1025-50-B-ML | | | |
| APPROVAL | ZSE | 2022/5/18 | MATERIAL | WEIGHT | SCALE | REV |
| FOR INFORMATION ONLYNOT FOR MANUFACTURING PURPOSES | | | N/A | 0.012kg | 2: 1 | A |