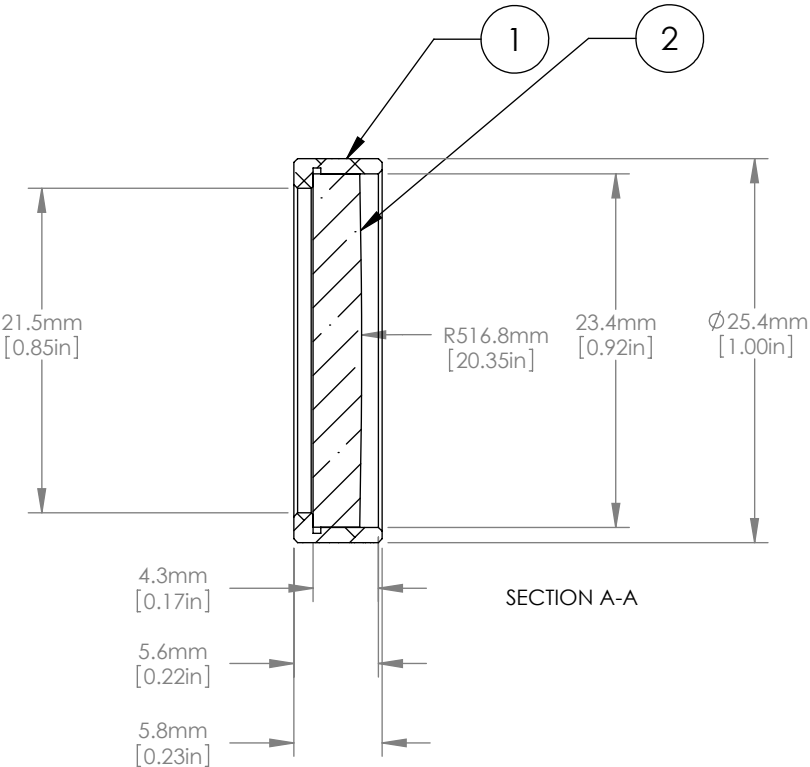
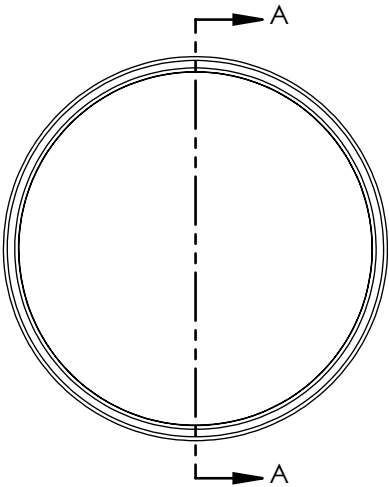




	ITEM	MATERIAL
①	BLACK ANODIZED MOUNTING RING	6061-T6 ALUMINUM
②	ROUND CYLINDRICAL LENS	N-BK7



- NOTES/SPECIFICATIONS:
1. FOCAL LENGTH: 1000.0mm ±1%
 2. WORKING DISTANCE: 996.5mm
 3. BBAR COATING: Ravg < 0.5% FOR 650-1050nm
 4. DESIGN WAVELENGTH: 587.6nm
 5. CLEAR APERTURE: >21.0mm
 6. SURFACE QUALITY: 60-40 SCRATCH-DIG
 7. CENTRATION: ≤ 3 arcmin

FOR INFORMATION ONLY
NOT FOR MANUFACTURING PURPOSES

DRAWING PROJECTION			 			
	NAME	DATE	D25.4 F=1000.0 Mounted Rd N-BK7 B Coated Plano Convex Cyl Lens			
DRAWN	CWD	2022/5/18	PXY1254RM-1000-B			
APPROVAL	ZSB	2022/5/18	MATERIAL	WEIGHT	SCALE	REV
FOR INFORMATION ONLYNOT FOR MANUFACTURING PURPOSES			SEE TABLE	0.03kg		B