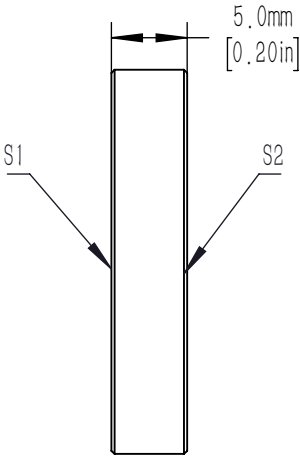
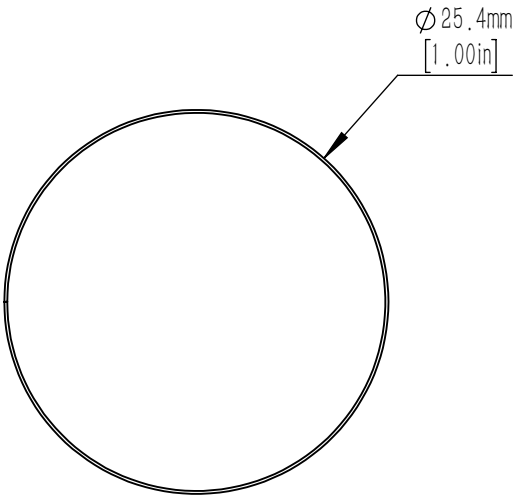



FOR INFORMATION ONLY NOT FOR  
MANUFACTURING PURPOSES



- NOTES/SPECIFICATIONS:
- 1.CLEAR APERTURE:  $\geq \phi 22.86\text{mm}$
  - 2.SURFACE FLATNESS:  $\leq \lambda / 10 @ 633\text{nm}$
  - 3.SURFACE QUALITY: 20-10 SCRATCH-DIG
  - 4.THICKNESS TOLERANCE:  $\pm 0.30 \text{ mm}$
  - 5.DIAMETER TOLERANCE:  $+0.00/-0.20 \text{ mm}$
  - 6.PARALLELISM:  $\leq 5 \text{ arcsec}$
  - 7.COATING(S1 & S2): BBAR RAVG  $< 0.5\%$   
FROM 1050-1700nm,  $0^\circ \pm 5^\circ \text{ AOI}$

DRAWING PROJECTION			 睿创光科 RCOPTICS			
	NAME	DATE	D25.4mm, N-BK7 Polished Window Blank, 5mm, -C			
DRAWN	CWD	2022/5/18	WG1254-5-C			
APPROVAL	ZSB	2022/5/18	MATERIAL	WEIGHT	SCALE	REV
FOR INFORMATION ONLYNOT FOR MANUFACTURING PURPOSES			N-BK7	0.006225kg	2:1	A